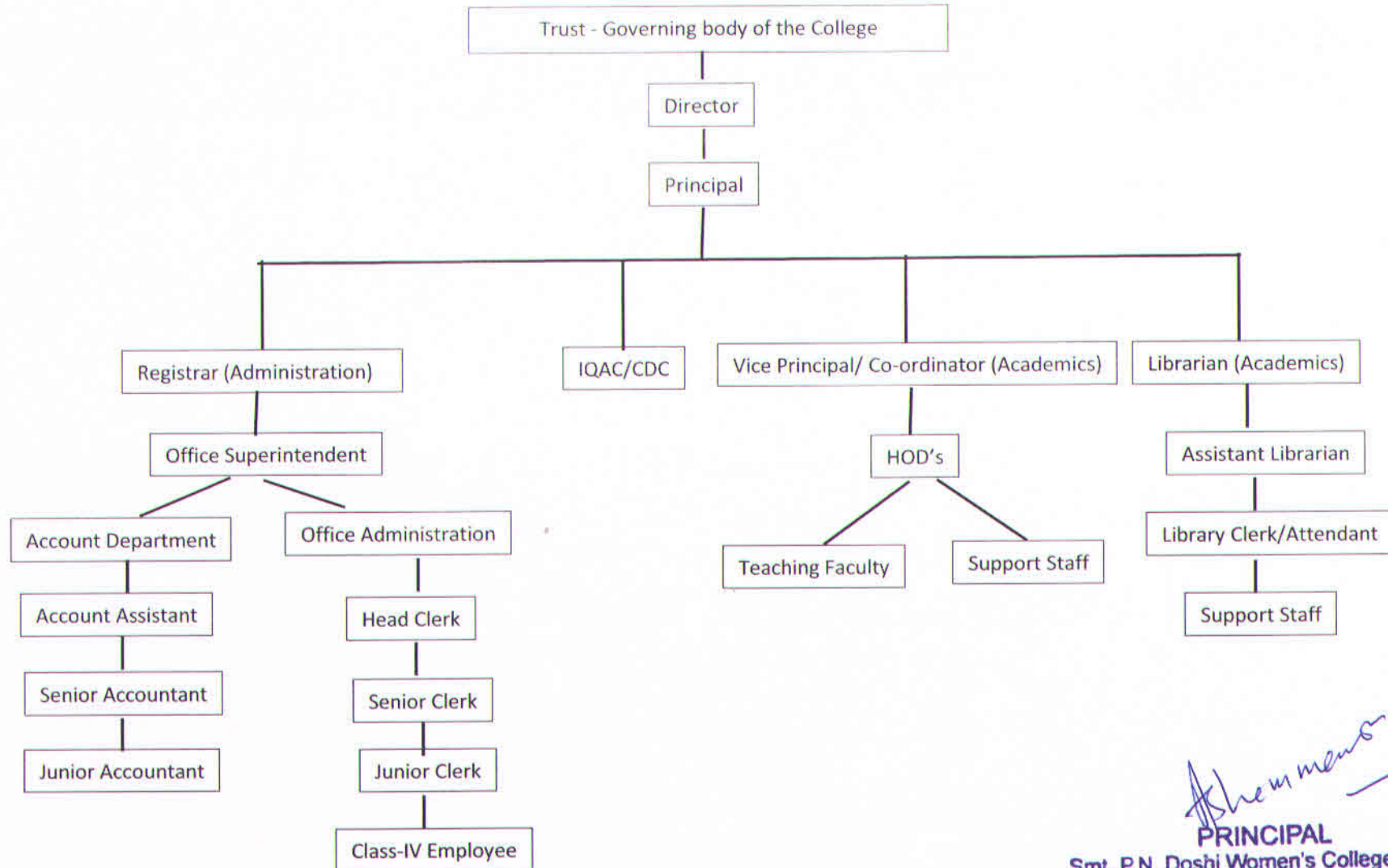


# Smt. P. N. Doshi Women's College

## Organogram



*Asheem menon*  
**PRINCIPAL**

Smt. P.N. Doshi Women's College of Arts  
 Kum. U.R. Shah Women's College of Commerce &  
 Dr. (Smt.) Nonavati Bhanuben Mahendrar Women's College of Home Science  
 Cama Lane, Ghatkopar (W), Mumbai - 86.

**Organogram Details:**

**Composition of internal quality assurance cell (IQAC):**

Management
Principal
IQAC Coordinator
Teachers to represent all levels (Assistant and Associate Professors)
The senior administrative officer (Office Superintendent/Manager)
Student Nominee

**Composition of college development cell (CDC):**

Management
Principal
IQAC Coordinator
One HOD nominated by the Principal
Teachers (Elected)
One Non-Teaching Staff (Elected)
Student Nominee

*P.N. Doshi*

**PRINCIPAL**

Smt. P.N. Doshi Women's College of Arts  
Kum. U.R. Shah Women's College of Commerce &  
Dr. (Smt.) Manuvati Bhanuben Mahendrar Women's College of Home Science  
Cama Lane, Ghatkopar (W), Mumbai - 86.